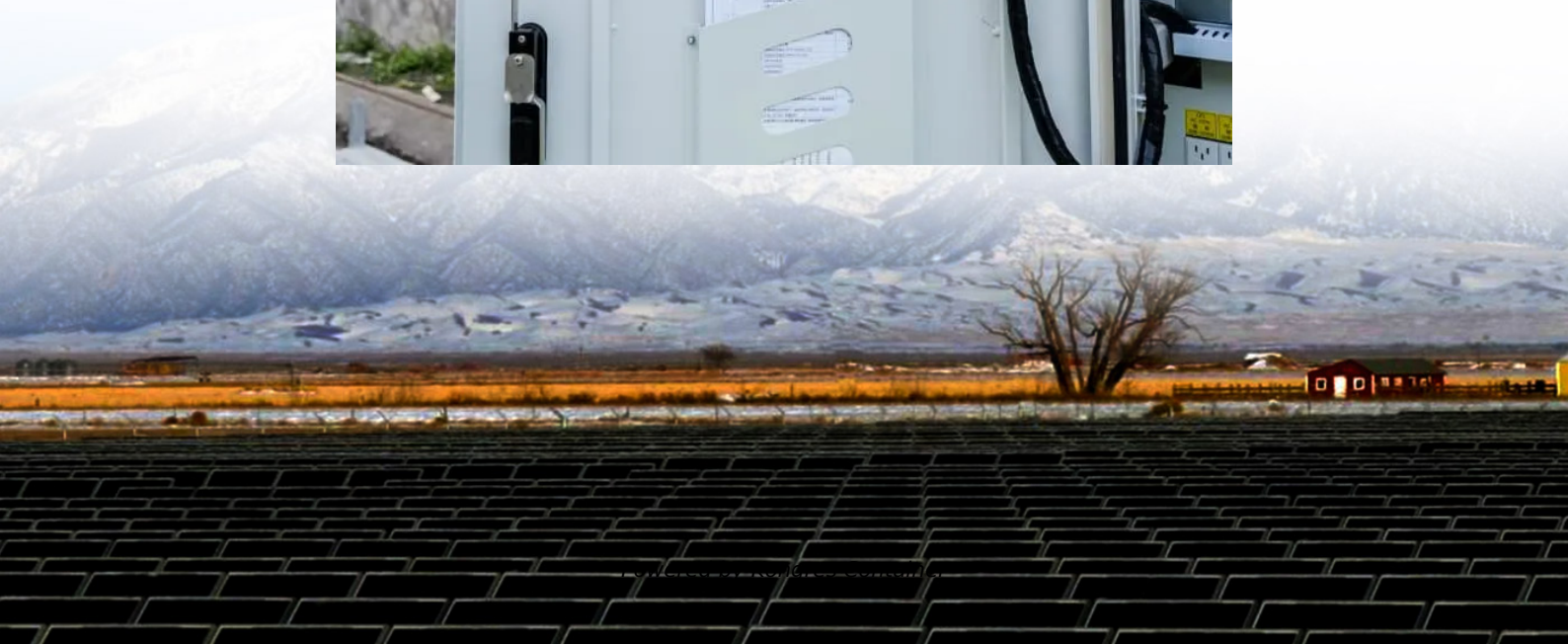


Kongres Container

Which Jamaican communication base station flow battery is more common



Overview

Currently, the majority of communication power systems use advanced valve-regulated sealed lead-acid (VRLA) batteries. These batteries typically have a single-cell voltage of 2V and are connected in series to form 48V or 24V systems.

Currently, the majority of communication power systems use advanced valve-regulated sealed lead-acid (VRLA) batteries. These batteries typically have a single-cell voltage of 2V and are connected in series to form 48V or 24V systems.

Lead-acid batteries have long been the backbone of telecom systems. Their reliability and affordability make them a popular choice for many network operators. These batteries consist of lead dioxide and sponge lead, immersed in a sulfuric acid electrolyte. This simple design allows for efficient.

A telecom base station backup battery is the safeguard that keeps communication flowing when the grid fails. But not all backup batteries are created equal. Choosing the right solution requires understanding the strengths and limitations of different technologies, as well as considering long-term.

The Communication Base Station Battery market is experiencing robust growth, driven by the expanding deployment of 5G and 4G networks globally. The increasing demand for higher data speeds and improved network coverage is fueling the need for reliable and efficient power backup solutions for base.

Telecom batteries refer to batteries that are used as a backup power source for wireless communications base stations. In the event that an external power source cannot be used, the telecom battery can provide a continuous power supply for the communication base station. Telecom batteries usually.

Telecom batteries for base stations are backup power systems that ensure uninterrupted connectivity during grid outages. Typically using valve-regulated lead-acid (VRLA) or lithium-ion (Li-ion) batteries, they provide

critical energy storage to maintain network reliability. These batteries must.

Among various battery technologies, Lithium Iron Phosphate (LiFePO₄) batteries stand out as the ideal choice for telecom base station backup power due to their high safety, long lifespan, and excellent thermal stability. This guide outlines the design considerations for a 48V 100Ah LiFePO₄ battery. Which battery is best for telecom base station backup power?

Among various battery technologies, Lithium Iron Phosphate (LiFePO₄) batteries stand out as the ideal choice for telecom base station backup power due to their high safety, long lifespan, and excellent thermal stability.

What makes a telecom battery pack compatible with a base station?

Compatibility and Installation Voltage Compatibility: 48V is the standard voltage for telecom base stations, so the battery pack's output voltage must align with base station equipment requirements. Modular Design: A modular structure simplifies installation, maintenance, and scalability.

What is a flow battery?

One such option is the flow battery. These batteries excel in energy storage, making them ideal for larger installations that require consistent power over extended periods. Another alternative is the sodium-sulfur (NaS) battery.

Which Jamaican communication base station flow battery is more co

Contact Us

For catalog requests, pricing, or partnerships, please visit:
<https://drugiswiatowykongrespolakow.pl>