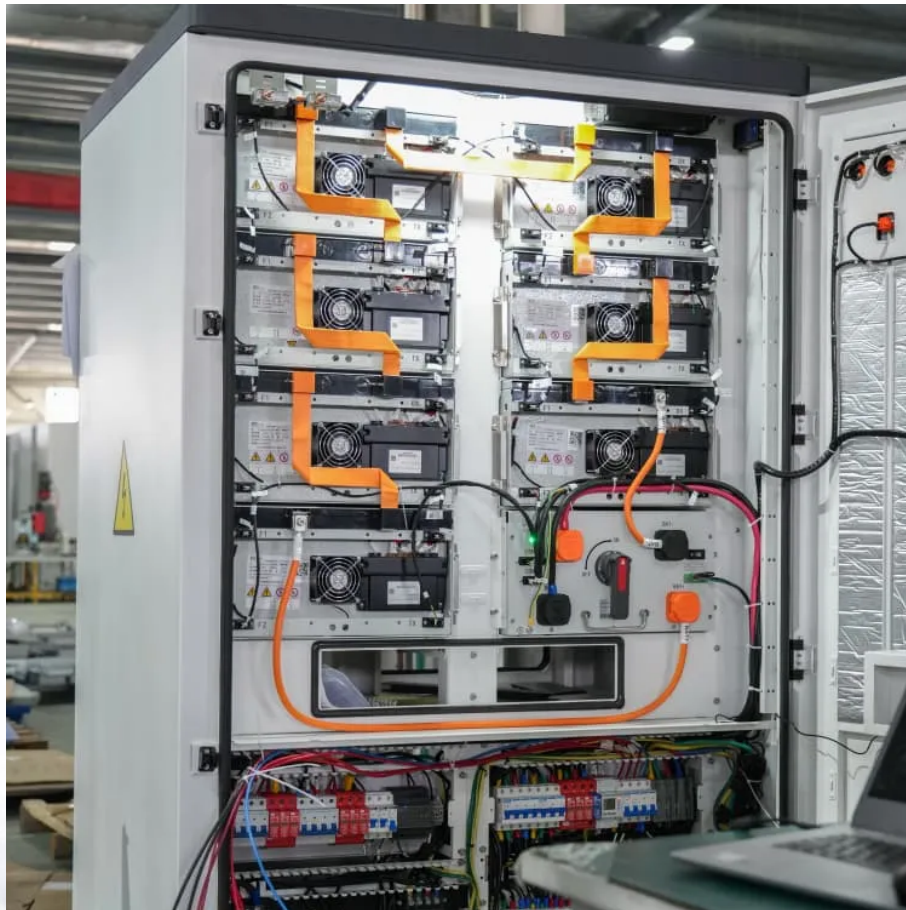


## Kongres Container

# What equipment is on the wind power station of the communication base station



## Overview

---

The invention provides a communication base station, which comprises: the omnidirectional antenna is fixedly arranged on the wind driven generator and is electrically connected with an internal circuit of the wind driven generator; the wind driven generator provides a vertical.

The invention provides a communication base station, which comprises: the omnidirectional antenna is fixedly arranged on the wind driven generator and is electrically connected with an internal circuit of the wind driven generator; the wind driven generator provides a vertical.

The invention provides a communication base station, which comprises: the omnidirectional antenna is fixedly arranged on the wind driven generator and is electrically connected with an internal circuit of the wind driven generator; the wind driven generator provides a vertical mounting support for.

Worldwide thousands of base stations provide relaying mobile phone signals. Every off-grid base station has a diesel generator up to 4 kW to provide electricity for the electronic equipment involved. The presentation will give attention to the requirements on using windenergy as an energy source.

A. System introductionThe new energy communication base station supply system is mainly used for those small base station situated at remote area without grid. The main loads of those small base station are 48V with rated 500W power more or less, the daily power consumption is about 12kwh. Here we.

Worldwide thousands of base stations provide relaying mobile phone signals. Every off-grid base station has a diesel generator up to 4 kW to provide electricity for the electronic equipment involved. The presentation will give attention to the requirements on using windenergy as an energy source.

As an emerging load, 5G base stations belong to typical distributed resources [7]. The in-depth development of flexibility resources for 5G base stations, including their internal energy Abstract: Due to dramatic increase in power demand for future mobile networks (LTE/4G, 5G), hybrid-

Hybrid energy solutions enable telecom base stations to run primarily on renewable energy sources, like solar and wind, with the diesel generator as a last resort. This reduces emissions, aligns with sustainability goals, and even opens up opportunities for carbon credits or green energy subsidies.

## What equipment is on the wind power station of the communication

---

## Contact Us

---

For catalog requests, pricing, or partnerships, please visit:  
<https://drugiswiatowykongrespolakow.pl>