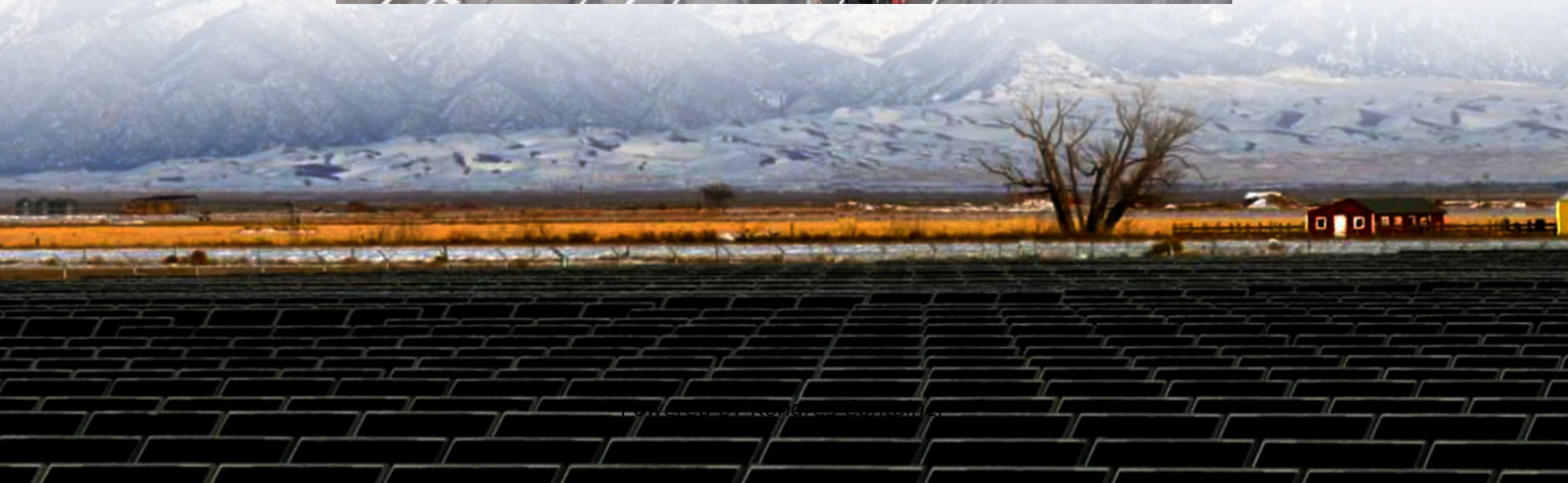
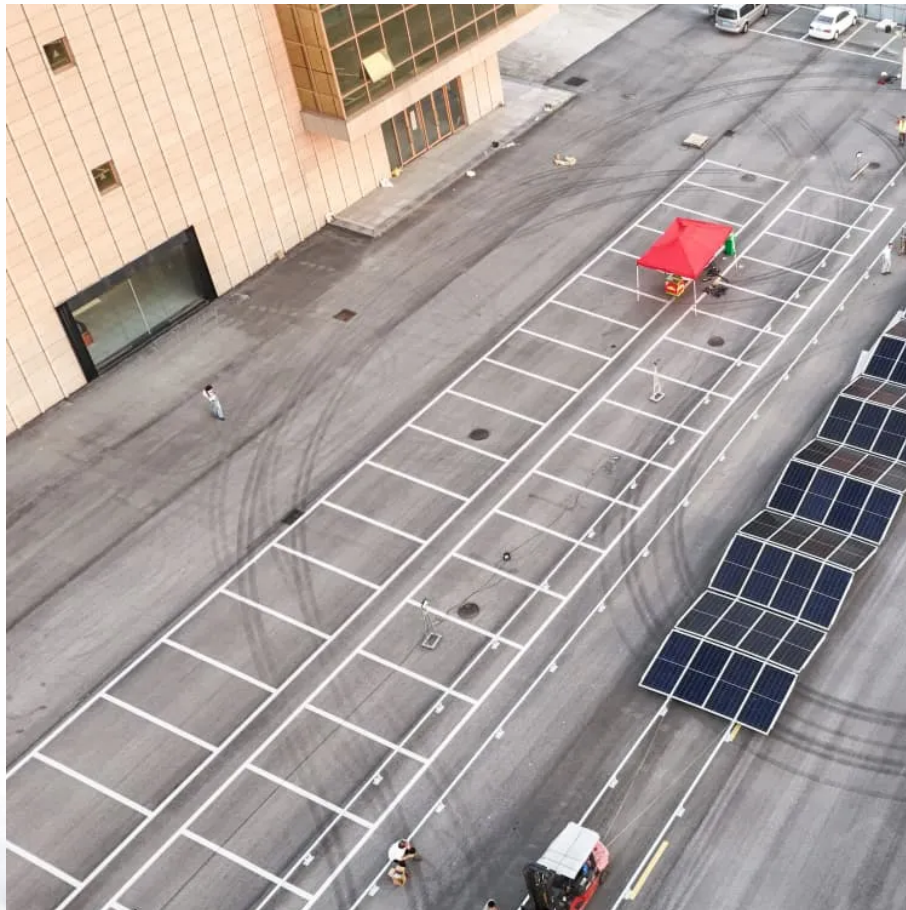


## Kongres Container

# What are the batteries for integrated 5G communication base stations



## Overview

---

What are the components of a 5G base station?

Baseband Unit (BBU): Handles baseband signal processing. Remote Radio Unit (RRU): Converts signals to radio frequencies for transmission. Active Antenna Unit (AAU): Integrates RRU and antenna for 5G-era efficiency. 2. Power Supply System This acts as the “blood supply” of the base station, ensuring uninterrupted power. It includes:.

What is a 5G Brain Center?

Often referred to as the brain center, this includes: Baseband Unit (BBU): Handles baseband signal processing. Remote Radio Unit (RRU): Converts signals to radio frequencies for transmission. Active Antenna Unit (AAU): Integrates RRU and antenna for 5G-era efficiency. 2. Power Supply System.

What is a base station power supply?

This acts as the “blood supply” of the base station, ensuring uninterrupted power. It includes: AC distribution box: Distributes mains power and offers surge protection. Switch-mode power supply: Converts and stabilizes power while managing DC output. Battery banks: Serve as backup power to keep systems running during outages. 3.

What is a communication base station?

In the vast telecommunications network, communication base stations play a frontline role. Positioned closest to end users, they serve as gateways for processing customer requests and managing data flow. In the words of "Interesting Communication Engineering Drawings," these stations act like “business trackers,” always vigilant to:.

What are the benefits of a base station?

Base stations, while small in structure, are equipped with everything necessary to operate independently. They ensure: Protection against

environmental factors like wind, rain, and lightning. Uninterrupted power supply through robust systems and backup solutions. Efficient signal transmission to connect users to the broader network.

What is a base station connection diagram?

The connection diagram provides a clear overview of how the main base station equipment operates within the network. Surrounding this central "brain" are the "Four Guardians" that ensure seamless functionality: Power Supply: Provides a steady and uninterrupted energy source to keep the equipment operational.

## What are the batteries for integrated 5G communication base station

---

### Contact Us

---

For catalog requests, pricing, or partnerships, please visit:  
<https://drugiswiatowykongrespolakow.pl>