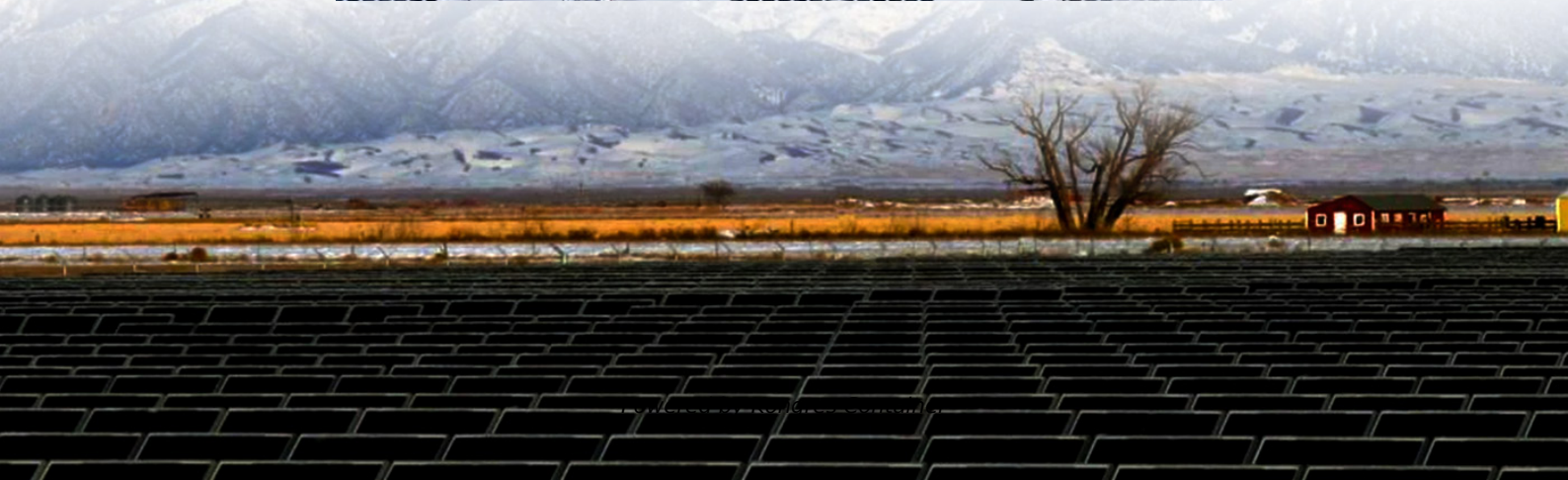
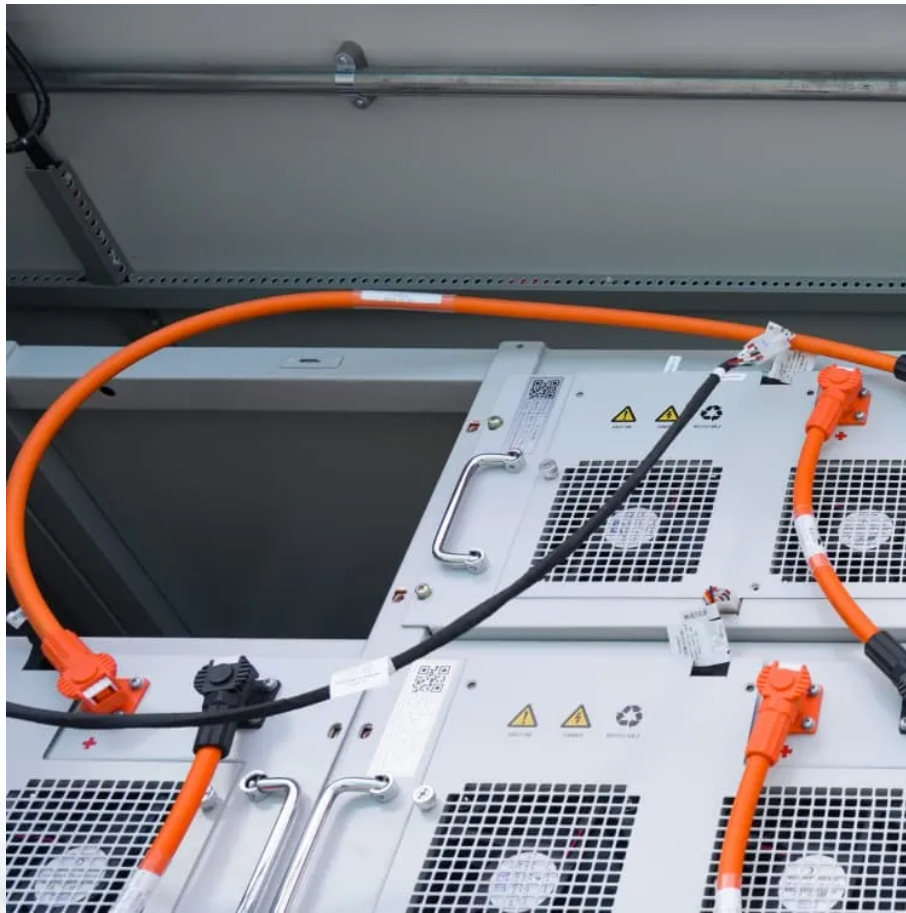


## Kongres Container

# The cost of inverter construction for Guinea s communication base stations



## Overview

---

Per site capex costs include \$39k for all active equipment, \$47k to build a full 30m tower and \$27k for installation.

## The cost of inverter construction for Guinea s communication base s

---

### Contact Us

---

For catalog requests, pricing, or partnerships, please visit:  
<https://drugiswiatowykongrespolakow.pl>