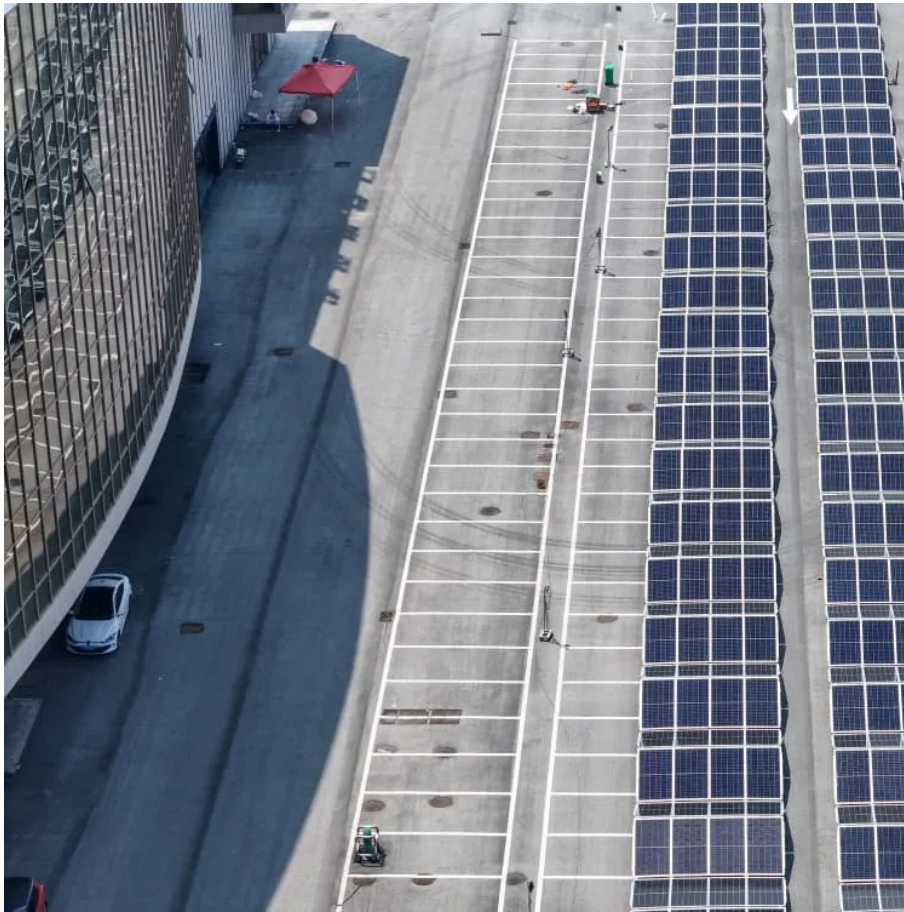


## Kongres Container

# Is the grid powered energy storage power station



## Overview

---

Energy from fossil or nuclear power plants and renewable sources is stored for use by customers. Grid energy storage, also known as large-scale energy storage, is a set of technologies connected to the electrical power grid that store energy for later use.

Energy from fossil or nuclear power plants and renewable sources is stored for use by customers. Grid energy storage, also known as large-scale energy storage, is a set of technologies connected to the electrical power grid that store energy for later use.

Energy storage has a pivotal role in delivering reliable and affordable power to New Yorkers as we increasingly switch to renewable energy sources and electrify our buildings and transportation systems. Integrating storage in the electric grid, especially in areas with high energy demand, will.

Is the grid powered energy s ation from times of peak load to off-peak hours. Power plants are able to run at heir peak efficiency during nights and weekends. Supply-demand leveling strategies may be intended to reduce the cost of supplying peak power or to compensate for the intermittent.

## Is the grid powered energy storage power station

---

### Contact Us

---

For catalog requests, pricing, or partnerships, please visit:  
<https://drugiswiatowykongrespolakow.pl>