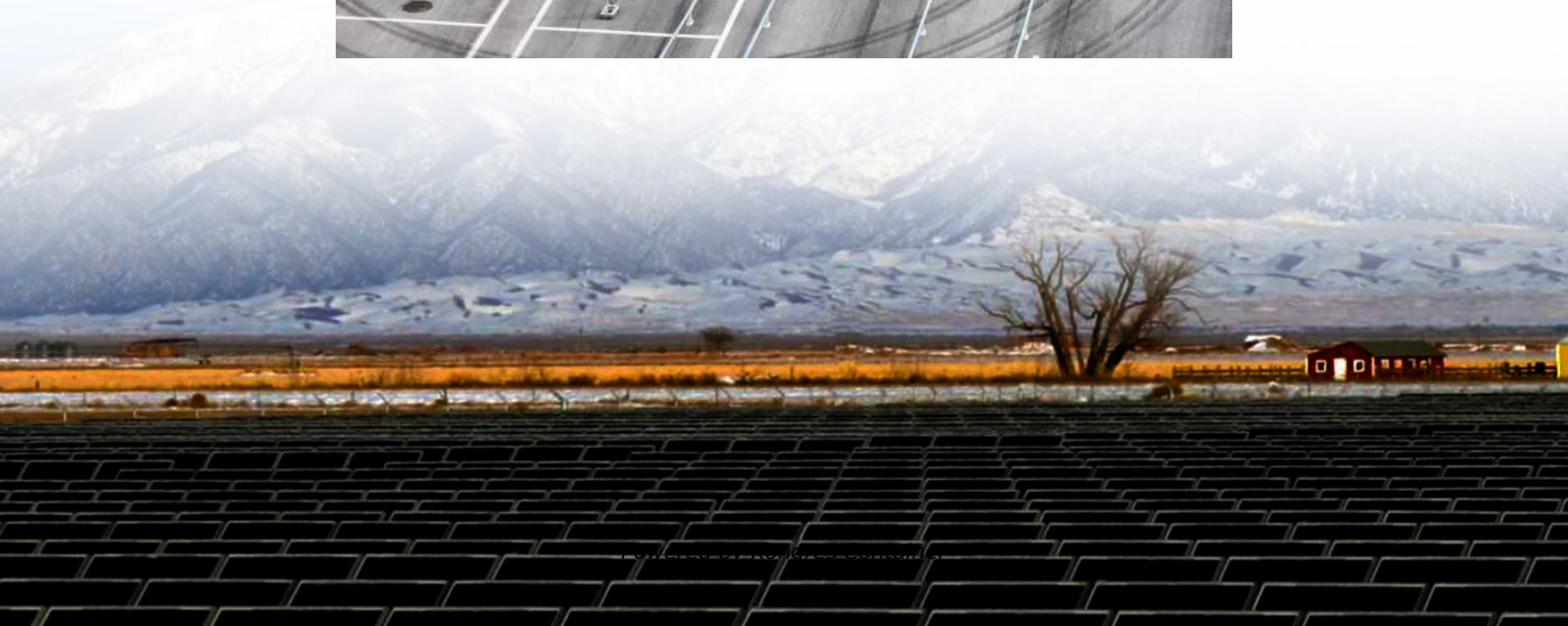
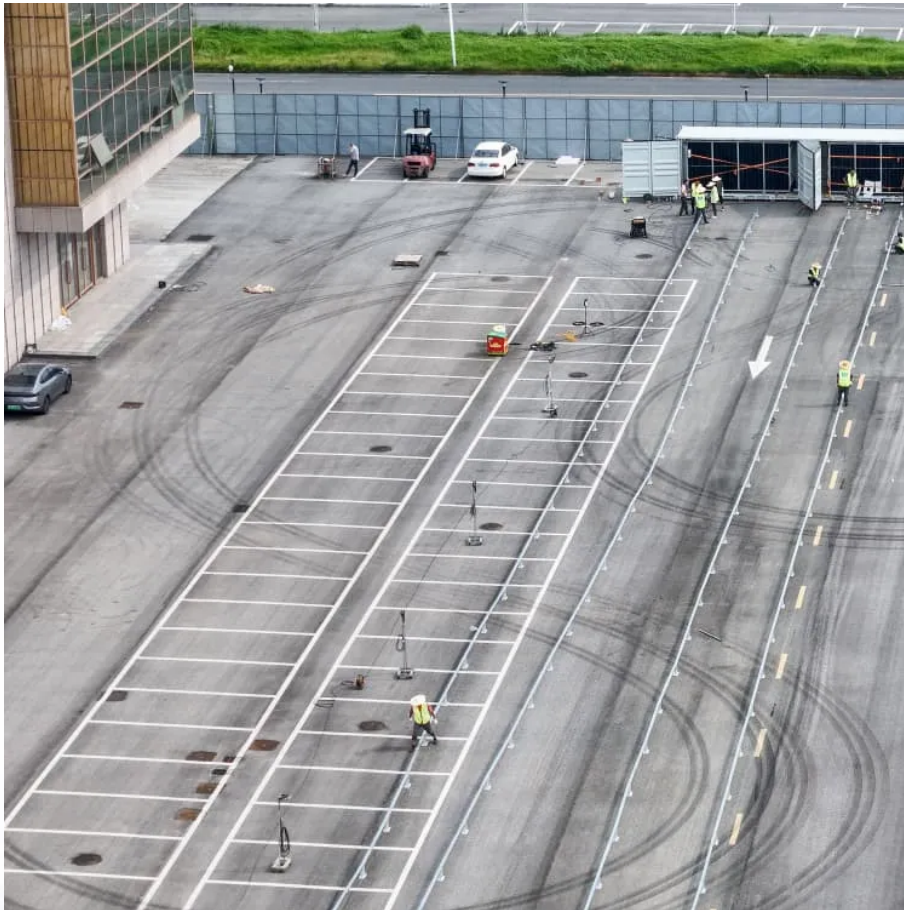


Kongres Container

Iceland Energy Storage Power Processing



Overview

In 1905 a power plant was set up in , a town which is a suburb of Reykjavík. Reykjavík wanted to copy their success, so they appointed Thor Jenssen to run and build a gas station, Gasstöð Reykjavíkur. Jenssen could not get a loan to finance the project, so a deal was made with Carl Francke to build and run the station, with options for the city to buy him out. Construction starte.

Iceland Energy Storage Power Processing

Contact Us

For catalog requests, pricing, or partnerships, please visit:
<https://drugiswiatowykongrespolakow.pl>