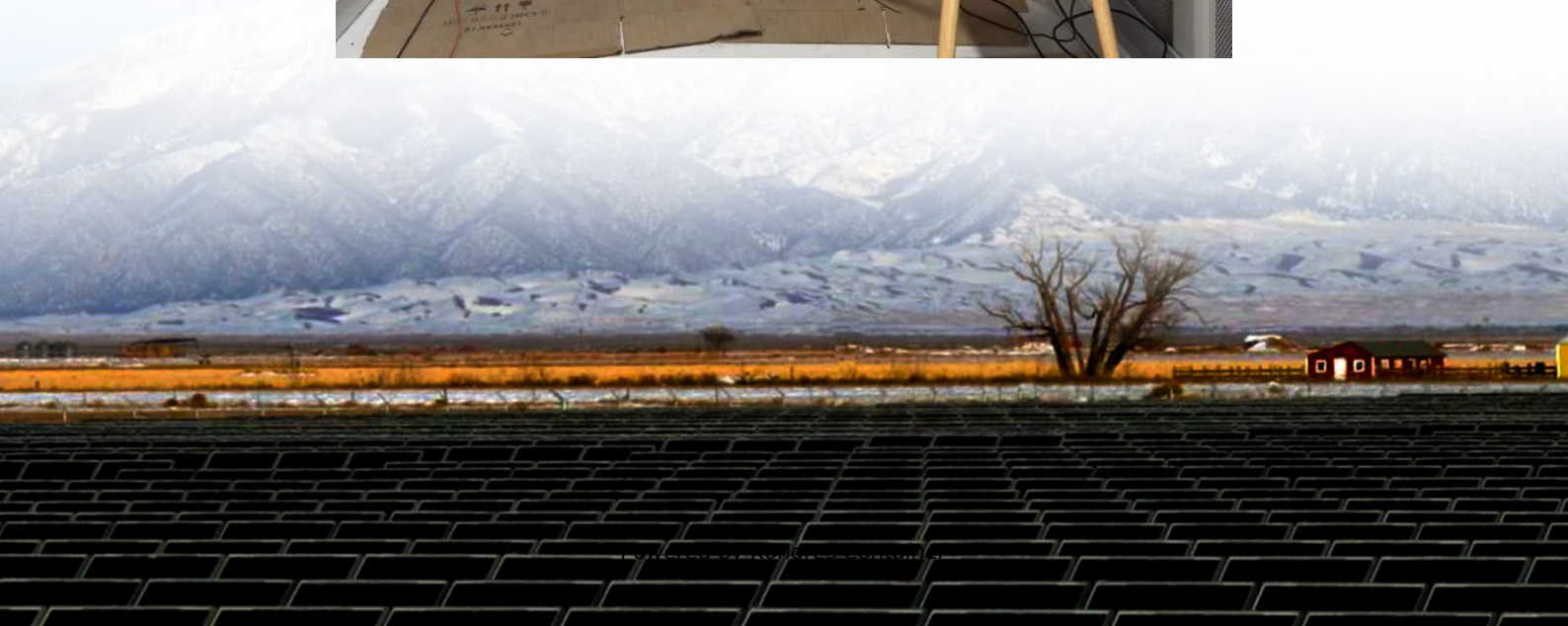
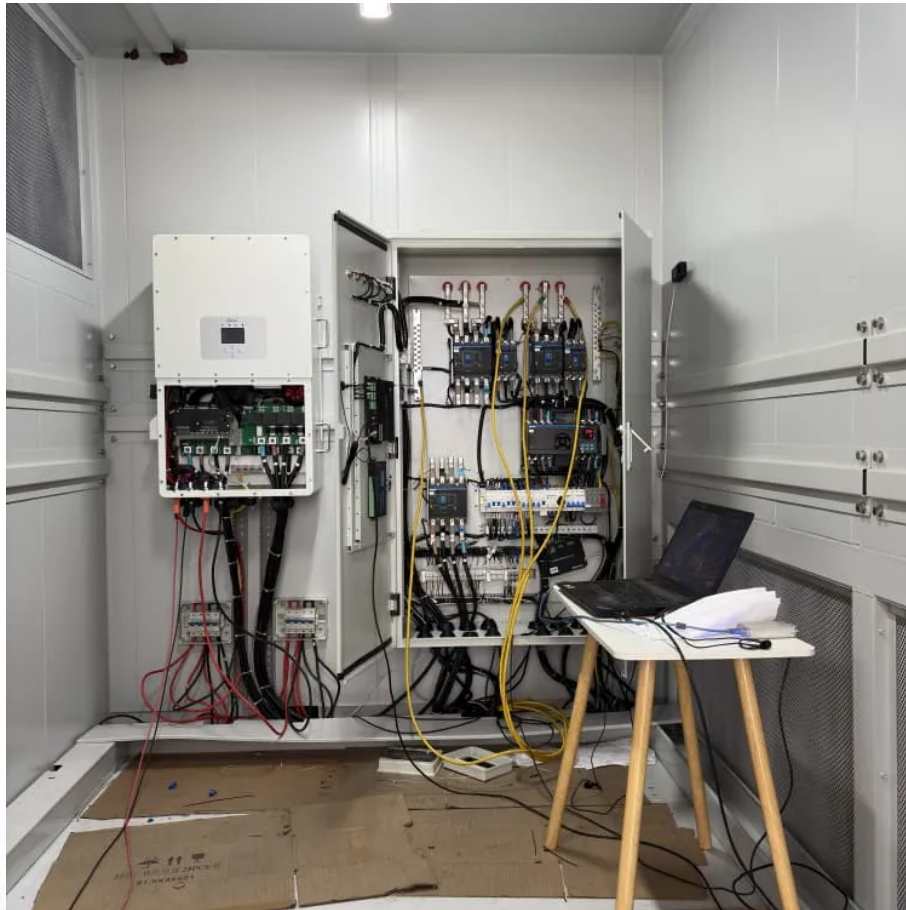


## Kongres Container

# Gambia 30w solar panel specifications



## Overview

---

Monocrystalline silicon solar module with high transmittance, high strength and durability. High efficiency monocrystalline solar cells. Glass thickness: 3.2mm, Low iron tempered glass. Standard test conditions (STC): AM1.5, Irradiance:1000W/square meters, Module temperature:25.

Monocrystalline silicon solar module with high transmittance, high strength and durability. High efficiency monocrystalline solar cells. Glass thickness: 3.2mm, Low iron tempered glass. Standard test conditions (STC): AM1.5, Irradiance:1000W/square meters, Module temperature:25.

Our destination is "You come here with difficulty and we give you a smile to take away" for Short Lead Time for Mono-Crystalline 30W Solar Panel Supply to Gambia, For further information, please do not hesitate to contact us. All inquiries from you will be highly appreciated. Superiority: high.

Reliable quality leads to a better sustainability even in harsh environment like desert, farm and coastline. Advanced glass and solar cell surface texturing allow for excellent performance in low-light environments. High module conversion efficiency (up to 14.23%), through innovative manufacturing.

WSL Solar's 30W solar panel (or PV panel) is built with the latest most efficient 5BB monocrystalline solar cell. It is laminated by tempered glass, which is durable and robust. This 18V solar panel is ideal for use in off grid applications such as solar powered LED lighting, solar traffic sign.

Monocrystalline silicon solar module with high transmittance, high strength and durability. High efficiency monocrystalline solar cells. Glass thickness: 3.2mm, Low iron tempered glass. Standard test conditions (STC): AM1.5, Irradiance:1000W/square meters, Module temperature:25 degrees centigrade.

The 30W 12V Solar Panel Kit is an essential off-grid solution for charging batteries in RVs, cars, boats, and more. Featuring a robust 10A intelligent charge controller, this kit ensures safe and efficient energy management. Built with durable materials, it withstands the elements while providing.

ing on the availability of sunlight). Bypass diode minimizes power drop caused by shade and ensures excellent performance in low-light environments. With dimensions of 570x340x25mm, you can carry his 30W solar panels with you easily. Pre-drilled holes on the back of the entally friendly for.

## Gambia 30w solar panel specifications

---

### Contact Us

---

For catalog requests, pricing, or partnerships, please visit:  
<https://drugiswiatowykongrespolakow.pl>