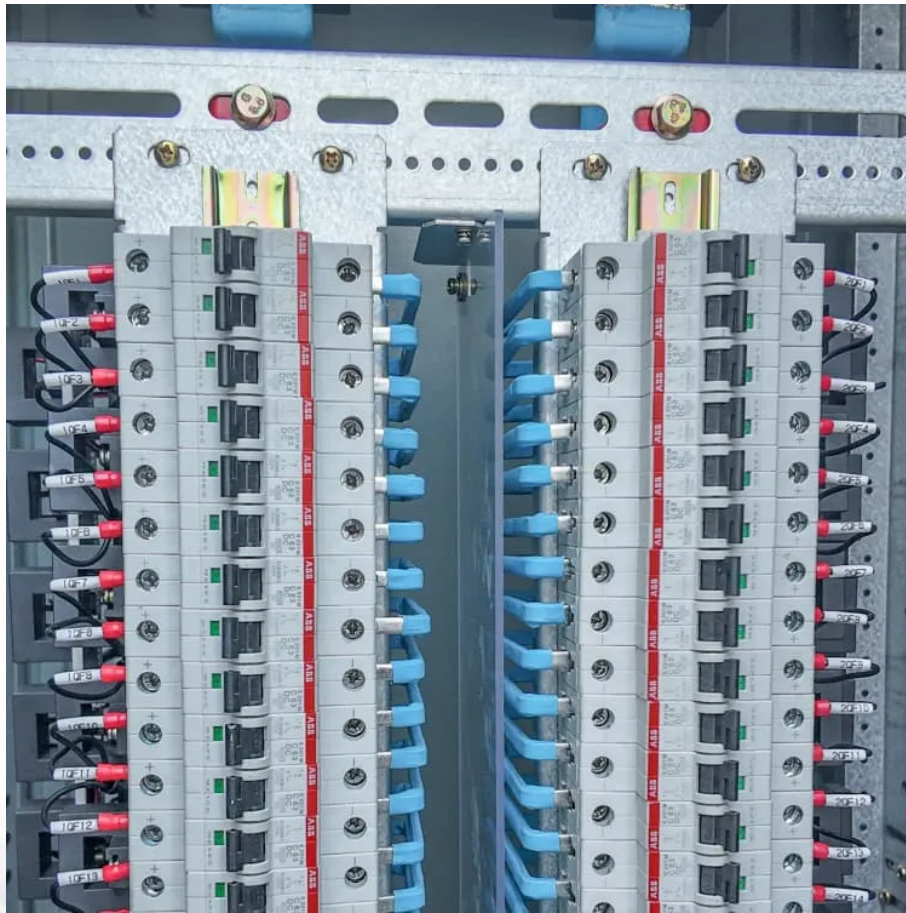


## Kongres Container

# Charging speed of a one-megawatt energy storage battery



## Overview

---

The charging and discharging speed of a BESS is denoted by its C-rate, which relates the current to the battery's capacity. The C-rate is a critical factor influencing how quickly a battery can be charged or discharged without compromising its performance or lifespan.

The charging and discharging speed of a BESS is denoted by its C-rate, which relates the current to the battery's capacity. The C-rate is a critical factor influencing how quickly a battery can be charged or discharged without compromising its performance or lifespan.

Battery Energy Storage Systems (BESS) are essential components in modern energy infrastructure, particularly for integrating renewable energy sources and enhancing grid stability. A fundamental understanding of three key parameters—power capacity (measured in megawatts, MW), energy capacity.

Battery storage is a technology that enables power system operators and utilities to store energy for later use. A battery energy storage system (BESS) is an electrochemical device that charges (or collects energy) from the grid or a power plant and then discharges that energy at a later time to.

The MEGATRON 1MW Battery Energy Storage System (AC Coupled) is an essential component and a critical supporting technology for smart grid and renewable energy (wind and solar). The MEG-1000 provides the ancillary service at the front-of-the-meter such as renewable energy moving average, frequency.

Long-term (e.g., at least one year) time series (e.g., hourly) charge and discharge data are analyzed to provide approximate estimates of key performance indicators (KPIs). FEMP has provided an evaluation of the performance of deployed photovoltaic (PV) systems for over 75 Federal PV systems and.

A Megawatt (MW) is a measure of power that indicates how much energy a battery can produce at any point in time. That is, battery storage with a 4MW rating will produce up to a power of 4 megawatts. On the other hand, the

megawatt-hour (MWh) is a measure of energy that indicates how much.

A 1 MWh BESS is a system that can store 1 megawatt-hour of electrical energy. This is equivalent to the energy consumption of about 100 average households in one hour. The BESS typically consists of batteries, power conversion systems (PCS), a battery management system (BMS), and other ancillary.

## Charging speed of a one-megawatt energy storage battery

---

### Contact Us

---

For catalog requests, pricing, or partnerships, please visit:  
<https://drugiswiatowykongrespolakow.pl>