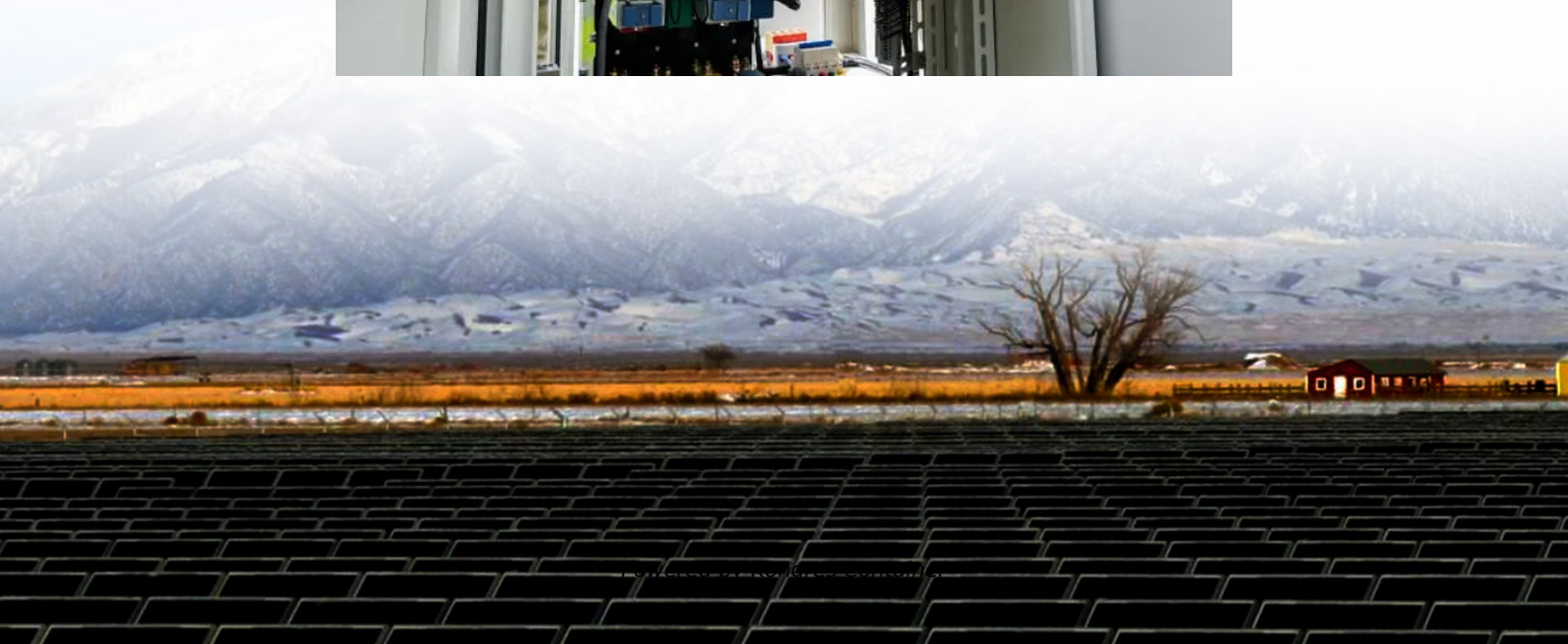


Kongres Container

Amorphous machine inverter battery



Overview

Enter amorphous machine inverter batteries – the Swiss Army knife of energy storage, combining rapid charge cycles with unmatched thermal stability. Unlike traditional lithium-ion batteries, amorphous variants use a dual-phase electrolyte that operates efficiently from -40°C to 85°C .

Amorphous machine inverter battery

Contact Us

For catalog requests, pricing, or partnerships, please visit:
<https://drugiswiatowykongrespolakow.pl>