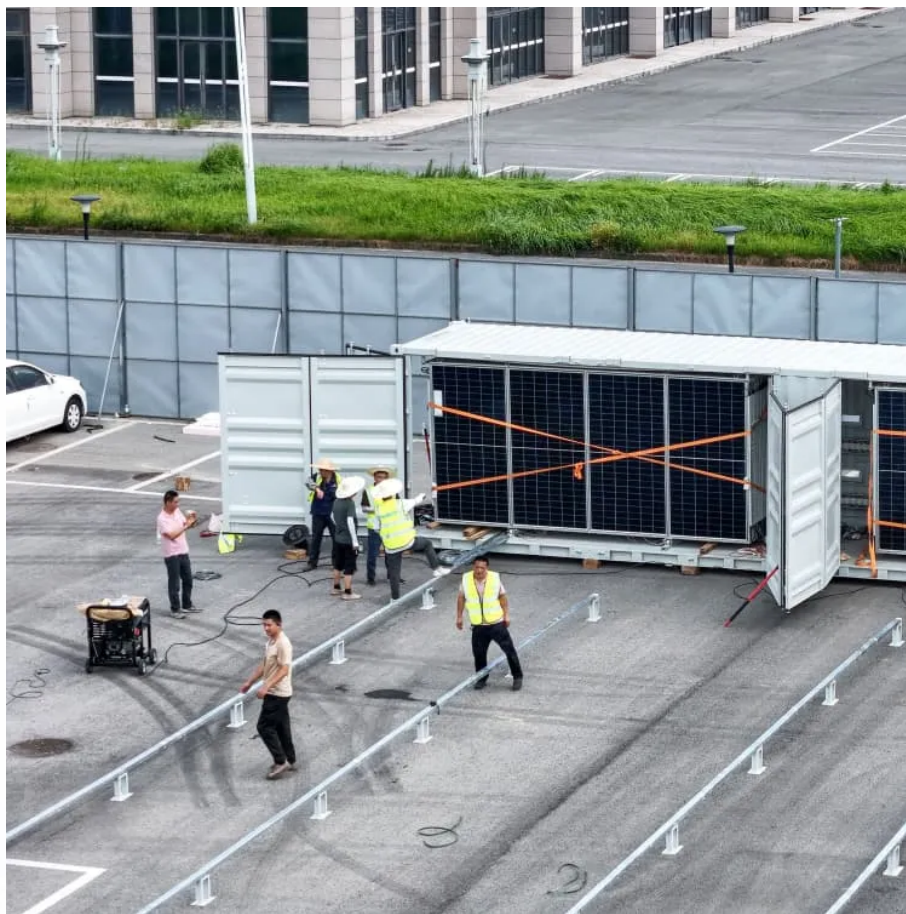


Kongres Container

20W solar power generation



Overview

A 20W solar panel operates by converting sunlight into electricity via photovoltaic cells. Under standard conditions, it will produce its rated output of around 20 watts when subjected to peak sunlight. However, various factors like shading or cloudy weather can significantly lower.

A 20W solar panel operates by converting sunlight into electricity via photovoltaic cells. Under standard conditions, it will produce its rated output of around 20 watts when subjected to peak sunlight. However, various factors like shading or cloudy weather can significantly lower.

To determine the electricity generated by a 20W solar panel, several factors must be considered, including the panel's efficiency, sunlight exposure, geographical location, and seasonal variations. 1. At peak sunlight, a 20W solar panel may generate approximately 20 watts per hour, but this can.

When it comes to reliable small-scale solar power, 20 watt solar panels offer the perfect balance of portability, efficiency, and durability for charging 12V batteries and powering small devices. Ideal for RVs, boats, campers, and outdoor activities, these panels provide sustainable energy for.

20-watt solar panels are one of the smallest solar panel sizes at the lowest price. They are helpful for many applications in the home and on the go. Here are some of the key aspects of 20-watt solar panels this article covers; If you've got a 20-watt solar panel or are interested in what they can.

20-watt solar panels are small solar panels designed to generate electricity from sunlight. They are great for charging batteries or powering small devices. These panels are lightweight and easy to install. Their size usually makes them portable, perfect for camping or small homes. Here are some.

Reliable Power Anywhere: Harvest More sunlight, power up faster, even on cloudy days. Greenmagic Portable Solar Generator included 20W monocrystalline solar panels deliver exceptional 23% conversion efficiency. With universal DC connectors, they work seamlessly with most portable generators on the.

To calculate solar panel output per day (in kWh), we need to check only 3 factors: Solar panel's maximum power rating. That's the wattage; we have 100W, 200W, 300W solar panels, and so on. How much solar energy do you get in your area?

That is determined by average peak solar hours. South.

20W solar power generation

Contact Us

For catalog requests, pricing, or partnerships, please visit:
<https://drugiswiatowykongrespolakow.pl>